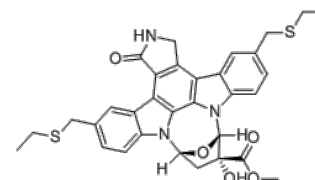


Product Name : CEP1347
Cat. No. : PC-70174
CAS No. : 156177-65-0
Molecular Formula : C₃₃H₃₃N₃O₅S₂
Molecular Weight : 615.76
Target : Mixed Lineage Kinase (MLK)
Solubility : 10 mM in DMSO



Biological Activity

CEP1347 (KT7515) is a potent and selective mixed lineage kinase (**MLK**) inhibitor that completely rescues motoneurons and inhibits **JNK1** activation with IC₅₀ of 20 nM.

CEP1347 has weak inhibitory activity for Trk A and MLCK.

CEP1347 promotes motoneuron survival and simultaneously inhibits the JNK1 signaling cascade.

CEP1347 inhibits recombinant MLK1/2/3 with IC₅₀ of 23-51 nM; blocks cell death (overexpression of MLK3) in CHO cells.

CEP1347 elicits neuroprotective and anti-inflammatory responses in models of neurodegenerative diseases.

References

Kaneko M, et al. *J Med Chem.* 1997 Jun 6;40(12):1863-9.

Maroney AC, et al. *J Neurosci.* 1998 Jan 1;18(1):104-11.

Maroney AC, et al. *J Biol Chem.* 2001 Jul 6;276(27):25302-8.

Eggert D, et al. *J Immunol.* 2010 Jan 15;184(2):746-56.

Caution: Product has not been fully validated for medical applications. Lab Use Only!

E-mail: tech@probechem.com